

# Butler Square

100 North Sixth Street  
Minneapolis, MN 55403

## SUITE 625B

1,587 RSF



LEASED BY:

# CBRE

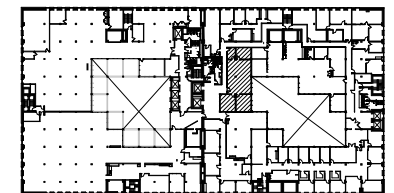
**Ann Rinde**

e | [Ann.rinde@cbre.com](mailto:Ann.rinde@cbre.com)  
p | 612.961.3652

MANAGED BY:

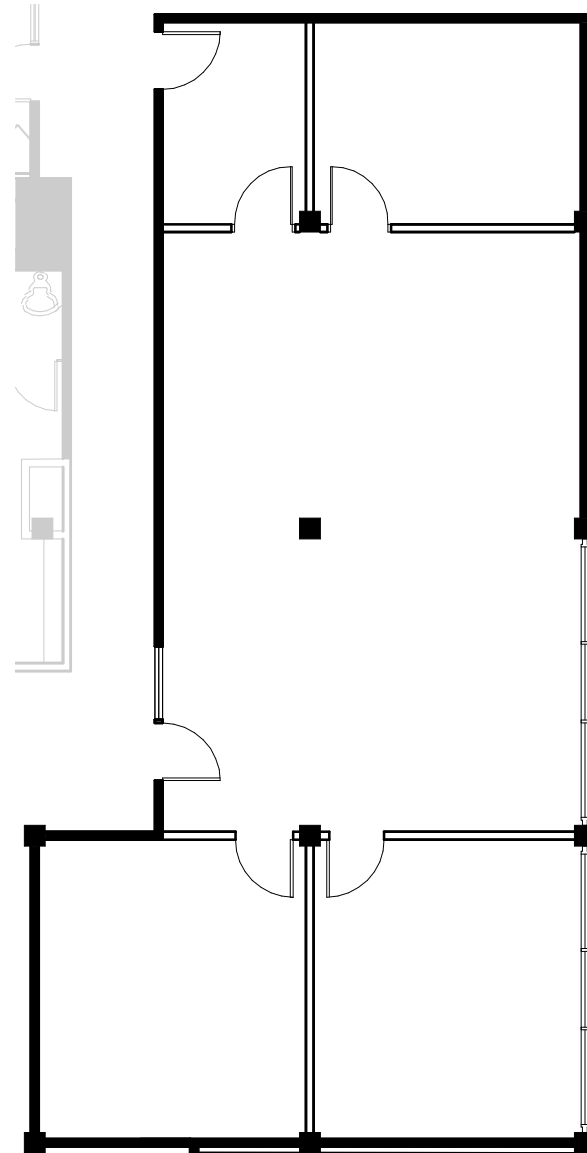


KEY PLAN



NORTH

SCALE: NTS



## Gensler

706 Second Avenue South  
Suite 1200  
Minneapolis, MN 55402